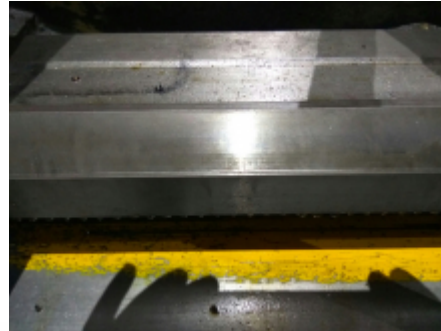


LATHE ZMM C4 400 MX2000

Ref: 046274



Bilder



STANDARD MACHINE SPECIFICATION		Standard	Optional	
CAPACITY	Height of center	mm	200 - 250	
	Swing over tool	mm	300 - 350	
	Swing over cross slide	mm	300 - 350	
	Swing to gap	mm	300 - 350	
	Width of bed	mm	400	
DISTANCE BETWEEN CENTERS	mm	1000, 1200, 1500, 2000, 2500, 3000		
	mm	4000, 5000		
SPINDLE	Spindle nose DN ISO21	Yes	No	
	Spindle lock	mm	12	
	Spindle taper	Metric	30	
	Number of spindle speeds		21	
SPINDLE SPEED	Spindle speed range	rpm	80 - 3000	
	Main motor power	kW	1.5 (1 / 1)	
	FEEDS	Number of feeds		60
LONGITUDINAL FEED RANGE	mm/min	0.20 - 1.0		
	Cross feed range	mm/min	0.20 - 4	
	THREADS	Number of threads		34
	Metric thread range	mm	0.8 - 120	
Imperial thread range	inch	30 - 5		
Module thread range	Module	0.50 - 30		
DP thread range	DP	2.0 - 1		
CUTTING	Cross slide travel	mm	100	
	Top slide travel	mm	100	
TAIL STOCK	Quill diameter	mm	50	
	Quill length	mm	150	
	Quill nose	mm	200	
WEIGHT	kg	2000	2000	